

# PORTABLE CONTAINER & CABIN CATALOGUE

MULTOP CONSTRUCTION SDN BHD (001134407-T)

FIRST FLOOR, NO 9 JALAN AU2A/17,

TAMAN SRI KERAMAT, 54200 KUALA LUMPUR

TEL: +6012-406 6648, +6012-333 9062 / FAX: +603-4106 5761

WEB: [www.kabinku.com.my](http://www.kabinku.com.my)



KabinKu

**MULTOP CONSTRUCTION SDN BHD (001134407-T)**

FIRST FLOOR, NO 9 JALAN AU2A/17,

TAMAN SRI KERAMAT, 54200 KUALA LUMPUR.

TEL: +6012-406 6648, +6012-333 9062 / FAX: +603-4106 5761

EMAIL: info@kabinku.com.my / WEB: www.kabinku.com.my

We provide decent quality **new and used** portable cabins and containers of **all types and sizes**.

Our portable cabins are **strong, durable** and built to exceptionally **high standards**.

We have list of readymade designs to choose from or work with you for **customized design** to your need.



**MULTOP CONSTRUCTION SDN BHD (001134407-T)**

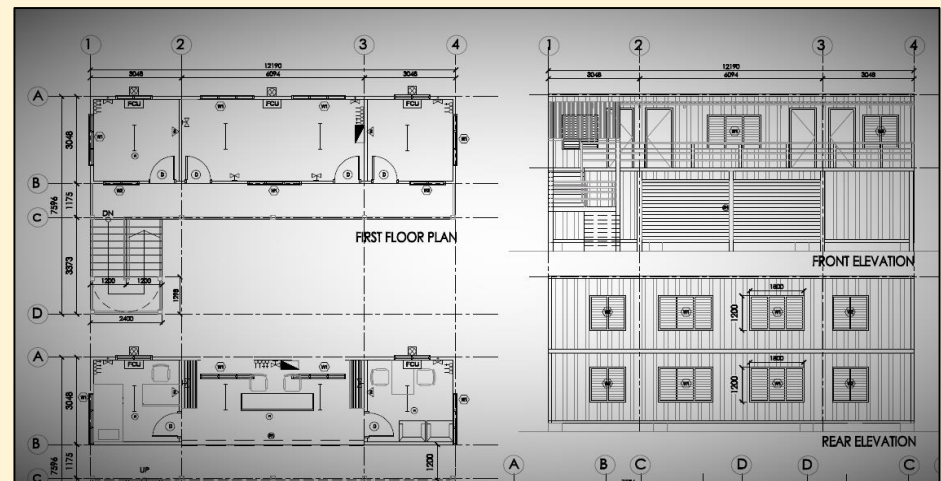
FIRST FLOOR, NO 9 JALAN AU2A/17,

TAMAN SRI KERAMAT, 54200 KUALA LUMPUR, MALAYSIA.

TEL: +6012-406 6648, +6012-333 9062 / FAX: +603-4106 5761

EMAIL: info@kabinku.com.my / WEB: www.kabinku.com.my

We produce custom design cabins to your specific layout requirements and your choice of colours as well as portable office cabin buildings that represent excellent value for money.



Basically, there are 4 types of cabins / containers:

## 1. Light-Duty Cabin

- External material (wall) : 0.23 mm corrugated metal
- Structure component : Light steel
- Suitable for short to medium term use such as construction site office etc.



## 2. Heavy-Duty Cabin

- External material (wall) : 0.5-1.0 mm corrugated metal plate
- Structure component : Steel and Mild Hollow Steel
- Suitable for medium to long term use such as storage cabins, guard house etc.



### 3. Container

- External material (wall) : 1.6-2.0mm corrugated metal plate
- Structure component : High-strength low-alloy steel
- Suitable for long term and rugged use such as resort, homes, high security storage etc.



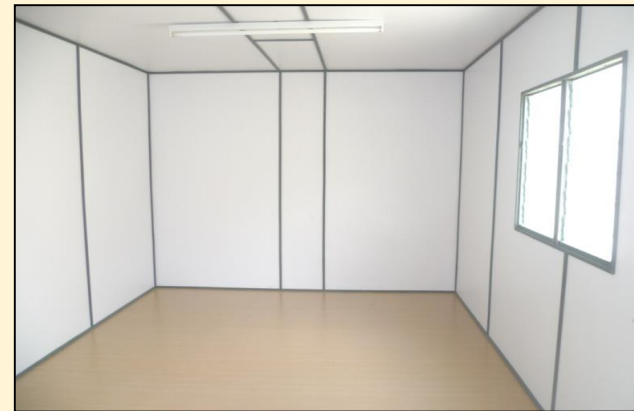
## 4. Modular Cabin

- External material (wall) : 0.23-0.40mm sandwich panel
- Structure component : Light weight steel, high strength and impact resistant.
- Suitable for mass production as they are normally of the same design.



Value for money, high specifications included as standard features

- High internal ceilings to create a spacious environment.
- Partition walls if required to create individual rooms and privacy.
- Electric specification to suit your requirements.
- Energy efficient design.
- High quality environment for the comfort of your workers.





- Fluorescent lights complete with diffusers.
- RCD consumer unit, electrical test and certificate.
- Your choice of floor coverings.
- Good finished steel works.



**MULTOP CONSTRUCTION SDN BHD (001134407-T)**

FIRST FLOOR, NO 9 JALAN AU2A/17,

TAMAN SRI KERAMAT, 54200 KUALA LUMPUR, MALAYSIA.

TEL: +6012-406 6648, +6012-333 9062 / FAX: +603-4106 5761

EMAIL: info@kabinku.com.my / WEB: www.kabinku.com.my



- Fixed and portable cabin ramps and stairs.
- Heavy duty iron grill for doors, windows, ventilators and air-cond compressors.

**MULTOP CONSTRUCTION SDN BHD (001134407-T)**

FIRST FLOOR, NO 9 JALAN AU2A/17,

TAMAN SRI KERAMAT, 54200 KUALA LUMPUR, MALAYSIA.

TEL: +6012-406 6648, +6012-333 9062 / FAX: +603-4106 5761

EMAIL: info@kabinku.com.my / WEB: www.kabinku.com.my

- Reliable transportation, crane services and logistic solutions.



**MULTOP CONSTRUCTION SDN BHD (001134407-T)**

FIRST FLOOR, NO 9 JALAN AU2A/17,

TAMAN SRI KERAMAT, 54200 KUALA LUMPUR, MALAYSIA.

TEL: +6012-406 6648, +6012-333 9062 / FAX: +603-4106 5761

EMAIL: [info@kabinku.com.my](mailto:info@kabinku.com.my) / WEB: [www.kabinku.com.my](http://www.kabinku.com.my)

## **OUR COMMITMENTS**

To produce quality products with excellent after sales services

**THANK YOU**